



MAY - VOLUME LV ISSUE 09

THERMOGRAM

MAIN MEETING: PRODUCTIVE FROM ANYWHERE

VIRTUAL TECH SESSION: DOAS AND CHILLED BEAMS

ASHRAE Meeting Details:

May 4th, 2023

Lunch Virtual Meeting:

Tech Session (GoToMeeting) 12:00—1:30pm

May 16th, 2023

Main Dinner Meeting: 5:00-8:30pm

Engineer's Club, Baltimore

Main Meeting: Productive From Anywhere

In the Spring of 2020, the world came to a screeching halt when the rapid spread of an infectious disease forced millions of people to shelter in place. Adapting to a new way of work – without the amenities of an office, in-person interactions, or business travel – proved to be a challenge for nearly everyone. In this presentation, attendees will learn about easy-to-implement tips and tricks to boost productivity. Plus, learn best practices for staying focused in any kind of workplace: in the office, working from home, or on the road.

Speaker: Pam Duffy, ASHRAE Distinguished Lecturer

Tech Session: DOAS and Chilled Beams

Join us for an overview of Dedicated Outdoor Air Systems (DOAS) and how they can be coupled with chilled beam systems. Participants will:

1. Gain familiarity with High Performance DOAS/ventilation principles and design strategies.
2. Learn how energy is saved by proper ventilation system design.
3. Review the traditional Chilled Beam System.
4. Learn about advanced DCV Chilled Beam Systems.
5. Gain awareness of DCV Chilled Beam Systems benefits.
6. Explore DCV chilled beam control strategies.

Speaker: Ashkan Oghabi, Swegon

PRESIDENT'S PEN

Dear Members,

It's hard to believe it, but we've arrived at our final meeting of the year already! This year brought lots of changes to ASHRAE, mainly the introduction of our monthly virtual technical session in lieu of an in person technical session. We have received excellent feedback on this change throughout the course of the year and we are thrilled that the membership has seen this as an additional benefit of being an ASHRAE member. We are planning to keep this change and continue offering FREE monthly virtual technical sessions to our members once we resume meetings in September.

Besides our May tech session and main dinner meeting, we have our annual golf outing as our final chapter event of the year. There are still limited slots available for foursomes, so sign up today if you are interested!

Later this summer, the Baltimore Chapter is hosting the regional chapter conference. This event will be held in Harbor East on August 10-12th and will be open to our membership. Our CRC committee is working on a schedule full of family-friendly events, so keep your eyes out for future communications so you can join in on the fun!

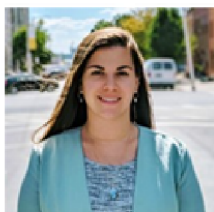
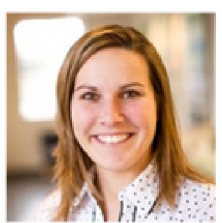
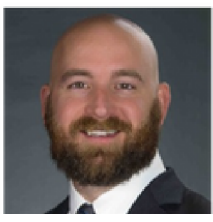
I'm looking forward to seeing many of you at these events, and I hope everyone has a safe and fun summer!

A handwritten signature in cursive script that reads "Nancy Neely".

Nancy Neely
ASHRAE President

Introducing your 2023-2024 Board of Govenors!

| Position | Full Name | Company |
|------------------------------|--------------------|---------------------------------|
| President | Theresa Schroeder | Whitman Requardt Associates |
| President-Elect | Kevin Lindemann | Chesapeake Systems |
| Treasurer | Kaylee Haupt | Baltimore County Public Schools |
| Secretary | Simona Tsvetkova | Johnson, Mirmiran, & Thompson |
| Governor/Assistant Secretary | Robert Broczkowski | ETC |
| Governor | Luis Belisario | Whitman Requardt Associates |
| Governor/Senior Advisor | TBA | |
| Former President | Nancy Neely | Johnson Controls Inc. |





65th Annual ASHRAE Baltimore GOLF OUTING & BANQUET

TURF VALLEY COUNTRY CLUB
2700 TURF VALLEY ROAD | ELlicOT CITY, MD 21042

| | |
|--|---------------------------------|
| JUNE 1ST, 2023 | COSTS |
| 9 AM SHOTGUN START | \$650 = FOURSOME |
| 2 PM CASH BAR & LUNCH AVAILABLE | \$150 = HOLE SPONSOR |
| 2 PM - 3 PM RECEPTION | \$800 = FOURSOME |
| 3 PM - 5 PM DINNER & AWARDS | (INCLUDING HOLE SPONSOR) |

DON'T FORGET - THE EVENT IS MOVED TO THURSDAY THIS YEAR!

TYLER LEE | GOLF CHAIR
P: 443.561.1600 | E: GOLF@ASHRAE-BALTO.ORG
REGISTER: ASHRAE-BALTO.ORG/GOLF



The Baltimore Chapter is hosting the 2023 Chapter Regional Conference!



2023

ASHRAE

REGION III CRC

AUGUST 10-12



SAVE THE DATE

- Join us for a family-friendly Chapters' Regional Conference
- Enjoy the beautiful Canopy Waterfront Hotel
- Gain invaluable insights to ASHRAE Regional & Society Operations
- Explore the Baltimore Aquarium, Maryland Science Center, Visionary Art Museum, the USS Constellation, among many others!

 (240) 542-5523

 crc@ashrae-balto.org

 www.ashrae-balto.org

BALMER RE-LAUNCH!

Remember the old MEMRA Books? Baltimore ASHRAE is thrilled to announce the re-launch of BALMER - the Baltimore Area List of Mechanical Engineering Resources - a website dedicated to equipment representatives and engineering firms to make it easier to find products, reps, and contact information needed in the industry. If you are interested in listing your firm, please contact us at president@ashrae-balto.org.

\$500 for Reps/Distributors
\$250 for Engineering Firms



BALMER

Baltimore Area List of Mechanical Engineering Resources

[Login](#)

Reps/Distributors Directory Engineers Directory Become An Advertiser

FIND A DISTRIBUTOR / REPRESENTATIVE

| | | | |
|---------------------------------------|--------------------------------------|--|----------------------|
| Search By Company Name | Search For Products | Filter by Manufacturer | Contact Name |
| <input type="text"/> | <input type="text"/> | <input type="text" value="Please select"/> | <input type="text"/> |
| <input type="button" value="Search"/> | <input type="button" value="Reset"/> | | |

Thank you to our 2022-2023 Chapter Sponsors!

RAVENS SPONSORS



ORIOLES SPONSORS



BLAST SPONSORS



2022-2023 Chapter Leadership Roster

Board of Governors

| | | | | | |
|---|---|---|--|--|--|
|  | President Nancy Neely | president@ashrae-balto.org, P:410.746.4168 Johnson Controls, Inc. |  | Governor/Asst. Secretary Simona Georgiev | asstsecretary@ashrae-balto.org, P:410.316.2263 JMT |
|  | President-Elect Theresa Schroeder | vp@ashrae-balto.org, P:443.224.1594 Whitman Requardt |  | Governor Robert Broczkowski | gov2@ashrae-balto.org, P:571.318.7310 ETC |
|  | Treasurer Kevin Lindemann | treasurer@ashrae-balto.org, P:410.561.1655 Chesapeake Systems |  | Senior Advisor Brad Watkins | senioradvisor@ashrae-balt.org, P:240.542.5523 Cummins-Wagner |
|  | Secretary Kaylee Haupt | gov2@ashrae-balto.org, P:443.789.0188 Baltimore County Public Schools |  | Past President Sam Philipp | pastpresident@ashrae-balto.org, P:410.316.2485 JMT |

Committee Chairs

| | | |
|--|---|--|
| Attendance/Recpt. Co-Chair: Luis Belisario, WRA reservations@ashrae-balto.org | Government Affairs: Tyler Brown, ATS gga@ashrae-balto.org | Research Promotion Co-Chair: Joe Petty, ATS research@ashrae-balto.org |
| Attendance/Recpt. Co-Chair: Elyas Khan, JCI reservations@ashrae-balto.org | Golf Outing: Tyler Lee, Chesapeake Systems golf@ashrae-balto.org | Scholarship: Robert Broczkowski, ETC scholarship@ashrae-balto.org |
| Christmas Party: Wade Myers, JMT christmas@ashrae-balto.org | Historian Hailey Brennan, Spectrum Energy historian@ashrae-balto.org | Student Activities: Nick Spicher, Chesapeake Systems studentacts@ashrae-balto.org |
| Chapter Programs: Theresa Schroeder, WRA programs@ashrae-balto.org | Historian Co-Chair: Jennifer Leach, BR+A historian@ashrae-balto.org | Thermogram: Kelly Brennan, Schneider Electric newsletter@ashrae-balto.org |
| CTA (Tech Awards): Theresa Schroeder, WRA cta@ashrae-balto.org | Membership: Rich Girard, RMF membership@ashrae-balto.org | Young Engineers: Co-Chair: Matt Francis, ATS yea@ashrae-balto.org |
| Diversity in ASHRAE Co-Chair: Patrick Harrilal, JMT dia@ashrae-balto.org | Membership Co-Chair: Ben Joel, WSP membership@ashrae-balto.org | Young Engineers Co-Chair: Matt Hart, ATS yea@ashrae-balto.org |
| DIA Co-Chair: Ashleigh Newman, The Morin Company dia@ashrae-balto.org | Refrigeration: Jon Olmstead, Hobbs & Associates refrigeration@ashrae-balto.org | Web Technician: Vikas Kiran, Prime Engineering ashtech@ashrae-balto.org |
| Engineers Week: Robert Broczkowski, ETC engweek@ashrae-balto.org | Research Promotion: Michael Poe, WSP research@ashrae-balto.org | Women in ASHRAE: Nicole Harshbarger, Schneider Electric wia@ashrae-balto.org |



BALTIMORE ENGINEERS **GOLF LEAGUE**

Join other engineers (and even an architect or two) for 9 holes every Tuesday evening, May 2 through August 22.
All abilities and experience welcome.

Dues are \$100, which covers a weekly prize for the winning low net score, post-round beverages, handicap software, advance tee time fees and an award for the overall league winner.

There is also an optional 18-hole event at the end of the league season and an optional three day golf weekend in Ocean City September 29-October 1.

Email dmtiburzi@verizon.net for more information or find us on Stack Team App – it's free, and request to join the 2023 Players group to view the schedule and receive league news.



Be an Energy Genius

ASHRAE's Building Energy Quotient program takes your building to the next step beyond benchmarking.

Get Involved with Building EQ:

- For an introduction or training options, reach out to a [Distinguished Lecturer](#) for a presentation to your chapter or committee.
- Learn more at www.ashrae.org/communities/chapters/distinguished-lecturers

Benefits of Building EQ:

- Building EQ supports sustainability mandates and goals to reduce energy and carbon use by providing a consistent approach and standardized reports for an ASHRAE Level 1 Energy Audit as defined in ASHRAE Standard 211 *Standard for Commercial Building Energy Audits*
- Building EQ helps building owners/operators understand their building's current energy usages and more importantly how they can improve their building's energy performance, either through physical renovation or changes in operating practice.
- Building EQ goes beyond ENERGY STAR Portfolio Manager benchmarking by offering actionable recommendations and concrete energy conservation measures as part of the Level 1 Energy Audit.
- Building EQ helps ASHRAE members offer valuable services to their clientele through benchmarking and energy auditing along with an Indoor Environmental Quality survey with recorded measurements.
- When used in conjunction with Standard 211 *Standard for Commercial Building Energy Audits*, Building EQ empowers building owners to understand the value and efficiency of their building assets and, more importantly, how they can improve their buildings' performance, reduce costs, and comply with the state's energy regulations with concrete building solutions.

Recent Updates to Building EQ:

- Three new operational carbon metrics were added to the Portal tracking total annual including total annual GHG emissions, total annual GHG emissions per square foot, and a Building EQ Carbon Performance Score (ratio of the rated building emissions to the baseline building emissions). As part of this change, Building EQ is also updating the electrical site-source conversion factors to reflect specific grid conditions rather than just one national average. The United States and Canada have been updated to date and up to 15 other countries/regions will be updated by the end of the Society Year.
- An update to the Building EQ As Designed assessment and rating was launched that uses models for both the baseline and candidate buildings. The modeling follows the performance rating method (PRM) as defined in Appendix G of ASHRAE Standard 90.1. With this change, one building simulation workflow can be used for multiple purposes, saving considerable time and effort, and improving the accuracy of the As Designed assessment.

- The spreadsheet audit report is now available for all users and all projects for the \$50 fee. The Portal auto-populates this ASHRAE Standard 211 compliant Excel spreadsheet report based on the information entered into the Portal.
 - A search function has now been added to the Energy Efficiency Measures (EEM) pull down menus under the EEM Tab. This allows you to quickly search the list based on key words.
 - A sample project is now added to each new account to allow new users to test and experiment with the Portal before launching their first project.
 - An alternate label report bringing back the old letter grades was added as an option for users who looking for a more defined rating approach.
- Both French and Spanish versions of the Portal are available for use by users.

Building EQ in Green Globes:

- [The Green Building Initiative's](#) (GBI) Green Globes rating systems for new construction and existing buildings have recently added alternative pathways for project teams who prefer to use ASHRAE Building EQ as an alternative to ENERGY STAR® and/or other benchmarking processes. This represents an opportunity to provide users with more options that make sense for their building.
- [Green Globes for New Construction 2021](#) (NC 21) has adopted ASHRAE Building EQ As Designed for international projects to evaluate building energy performance based on energy modeling inputs. Point scoring within Green Globes NC 21 begins with 10 points for an 85 As Designed score, up to a maximum of 180 points for a 50 or lower score – potentially 18% out of all points available in Green Globes NC 21.
- [Green Globes for Existing Buildings 2021](#) (EB 21) adopted ASHRAE Building EQ In Operation for use by all existing commercial buildings to benchmark against the median performance of existing US buildings of similar building use, normalized by climate and occupancy. Point scoring begins with 6 points for an 85 In Operation score, up to a maximum of 100 points for a 50 or lower score – potentially 10% out of all points available in Green Globes EB 21.
- Both pathways require project teams to complete the Building EQ certification and provide the resulting label to their assigned third-party Green Globes Assessor for verification to achieve their respective points. Technical Manuals for both Green Globes NC 21 and Green Globes EB 21 include expanded guidance describing how the ASHRAE Building EQ scores are calculated using the methodology to establish benchmarks based on ANSI/ASHRAE/IES Standard 100-2015 using methodologies developed at Oak Ridge National Laboratory (ORNL). The Building EQ scoring system is also described in detail within the technical manuals' assessment guidance, including a sample ASHRAE Building EQ label and Building Performance Score.

For additional information on the benefits of Building EQ,
 please visit www.ashrae.org/BuildingEQ
 or email BuildingEQ@ashrae.org

