



SEPTEMBER - VOLUME LVI ISSUE 01

THERMOGRAM

MAIN MEETING: NETWORKING AT TIKI LEE'S

VIRTUAL TECH SESSION: BOILER BEST PRACTICES

ASHRAE Meeting Details:

September 7, 2023

Lunch Virtual Meeting: 12:00—1:30pm

Main Dinner Meeting: 5:30-7:30pm

Tech Session: Boiler Best Practices for Design, Installation, and Maintenance

This presentation will cover best practices for hydronic boiler applications, including; gas piping and regulators, piping systems and accessories, venting basics, water quality and more.

Speaker: Chris Biehl, Application Specialist at Patterson-Kelley

Main Meeting: Networking Social at Tiki Lee's Dock Bar

4309 Shore Road, Sparrows Point, MD 21219

Join us for an end-of-summer social to kick off a fantastic new ASHRAE year!

Dress is casual - Hawaiian shirts encouraged!

\$35 for members, \$45 for non-members. Includes drinks and appetizers, and includes registration for tech session. Registration for virtual tech session only is free for members, \$10 for non-members



[Register Here!](#)

2023-2024 Chapter Leadership Roster

Board of Governors

| | | | | | |
|---|---|---|--|--|---|
|  | President Terry Schroeder | president@ashrae-balto.org, P: 443.224.1594 WRA |  | Governor/Asst. Secretary Rob Broczkowski | asstsecretary@ashrae-balto.org, P: 571.318.7310 ETC |
|  | President-Elect Kevin Lindemann | vp@ashrae-balto.org, P: 410.561.1655 Chesapeake Systems |  | Governor Luis Belisario | gov2@ashrae-balto.org, P: Prime AE |
|  | Treasurer Kaylee Haupt | treasurer@ashrae-balto.org, P: 443.789.0188 Baltimore County Public Schools |  | Senior Advisor Sam Philipp | senioradvisor@ashrae-balto.org, P: 410.316.2485 JMT |
|  | Secretary Simona Georgiev | secretary@ashrae-balto.org, P: 410.316.2263 JMT |  | Past President Nancy Neely | pastpresident@ashrae-balto.org, P: 410.746.4168 Johnson Controls |

Committee Chairs

| | | |
|--|---|--|
| Attendance/Recpt. Co-Chair: Elyas Khan, JCI reservations@ashrae-balto.org | Government Affairs: Tyler Brown, ATS gga@ashrae-balto.org | Research Promotion Co-Chair: Joe Petty, ATS research@ashrae-balto.org |
| Attendance/Recpt. Co-Chair: Tim Scheck, C-W reservations@ashrae-balto.org | Golf Outing: Tyler Lee, Chesapeake Systems golf@ashrae-balto.org | Scholarships: Hailey Brennan, Spectrum Energy scholarship@ashrae-balto.org |
| Christmas Party: Wade Myers, JMT christmas@ashrae-balto.org | Historian: Jennifer Leach, BR+A historian@ashrae-balto.org | Student Activities: Abe Undieh, Chesapeake Systems studentacts@ashrae-balto.org |
| Chapter Programs: Kevin Lindemann, Chesapeake Systems programs@ashrae-balto.org | Historian Co-Chair: Terry Schroeder, WRA historian@ashrae-balto.org | Thermogram: Terry Schroeder, WRA newsletter@ashrae-balto.org |
| CTA (Tech Awards): Kevin Lindemann, Chesapeake Systems cta@ashrae-balto.org | Membership: Rich Girard, RMF membership@ashrae-balto.org | Young Engineers: Co-Chair: Matt Francis, ATS yea@ashrae-balto.org |
| Diversity in ASHRAE Co-Chair: Patrick Harrilal, JMT dia@ashrae-balto.org | Membership Co-Chair: Ben Joel, WSP membership@ashrae-balto.org | Young Engineers Co-Chair: Matt Hart, ATS yea@ashrae-balto.org |
| DIA Co-Chair: Ashleigh Newman, The Morin Company dia@ashrae-balto.org | Refrigeration: Jon Olmstead, Hobbs & Associates refrigeration@ashrae-balto.org | Web Technician: Maggie Palacz, Schneider Electric ashtech@ashrae-balto.org |
| Engineers Week: Nick Spicher, Chesapeake Systems engweek@ashrae-balto.org | Research Promotion Co-Chair: Michael Poe, Legacy Engineering Group research@ashrae-balto.org | Women in ASHRAE: Nicole Harshbarger, Schneider Electric wia@ashrae-balto.org |

PRESIDENT'S PEN

Hello!

Welcome to a new ASHRAE year! I can't wait to see everyone again after our summer break. We have some great activities planned to start off the year; take a look inside for more information.

I want to start off with special thanks to Brad Watkins and all of our volunteers who planned and executed the recent Chapters Regional Conference for Region III. The CRC took place in Harbor East on August 10-12th and we hosted ASHRAE Chapters from Pennsylvania, DC, and Virginia for business, training, education, and social events. The event was very well-received, and featured technical sessions on ethics and regional utility incentives. Brad and his team deserve a hearty round of applause!

As we start our new year, we have our regular meetings, a Fishing Tournament, and our Annual Christmas Party to look forward to. I'm looking forward to seeing many of you at these events, and at the ESB for our regular meetings!

A handwritten signature in blue ink that reads "Terry Schroeder". The signature is written in a cursive, flowing style.

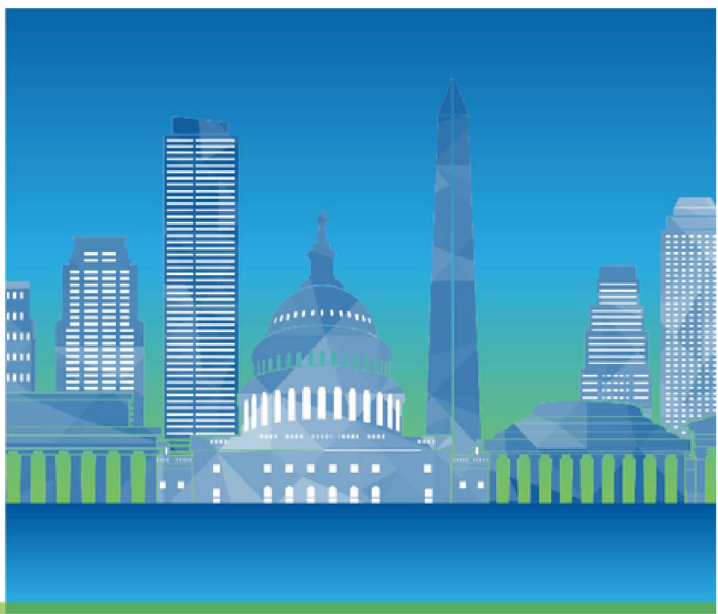
Terry Schroeder
ASHRAE President

UPCOMING EVENTS

2023 Decarbonization Conference for the Built Environment

October 25-27, 2023
Renaissance Arlington Capital View
Washington D.C. Metro Area

REGISTER NOW

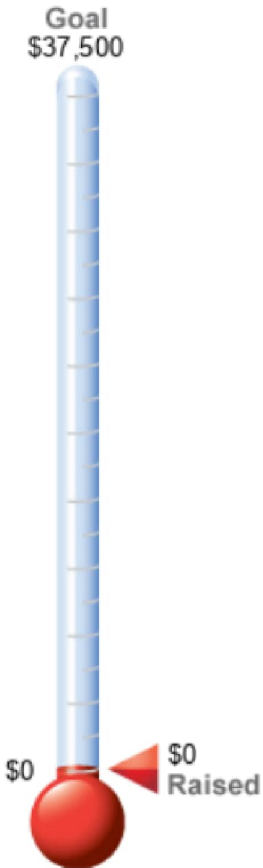


The Decarbonization Conference for the Built Environment will be an information and idea exchange, between stakeholders in the built environment industry, concerning the timely and important topic of reducing carbon emissions from buildings. The goal is to discuss the design, construction, ownership, and operation of facilities targeted for reduced or neutral impact on the environment with respect to carbon footprint. A primary objective of the conference is to enhance the knowledge base in North America on decarbonization efforts.

The conference is organized by:



Our 2023-2024 Research Promotion campaign has begun!



The **Research Promotion Committee** manages and supports both Society-level fundraising and Chapter-level fundraising for the annual RP Campaign. Traditionally supporting just research, the RP Campaign was expanded 10 years ago to include support of Education & the ASHRAE Learning Institute (ALI), Endowed Research through the ASHRAE Foundation, YEA programs, ASHRAE Scholarships, and the General/Unrestricted fund. Research, the backbone of ASHRAE, remains the primary fund of the program with over \$2 million raised for this program annually.

The 2023-2024 Research Promotion Campaign is in full swing! Our goal is \$37,500 this year, so every contribution counts. Please continue to help us reach our Research goal again this year. There are two ways to contribute:

1. **Online [here](#)**. Please fill in all the required information and remember to put BALTIMORE CHAPTER in the Assigned ASHRAE Chapter area so your chapter can receive credit.
2. **Mail in a check**. Please print a copy of the [receipt invoice](#) and make your checks out to ASHRAE RESEARCH FUND. Again, please remember to add BALTIMORE CHAPTER to the memo line. Send to:

ASHRAE RP
180 Technology Parkway
Peachtree Corners, Georgia 30092 US.

If you have any additional questions or are interested in joining the committee, please feel free to contact our [RP Committee Chair](#). We hope we can count on your support !!!

BALMER DIRECTORY

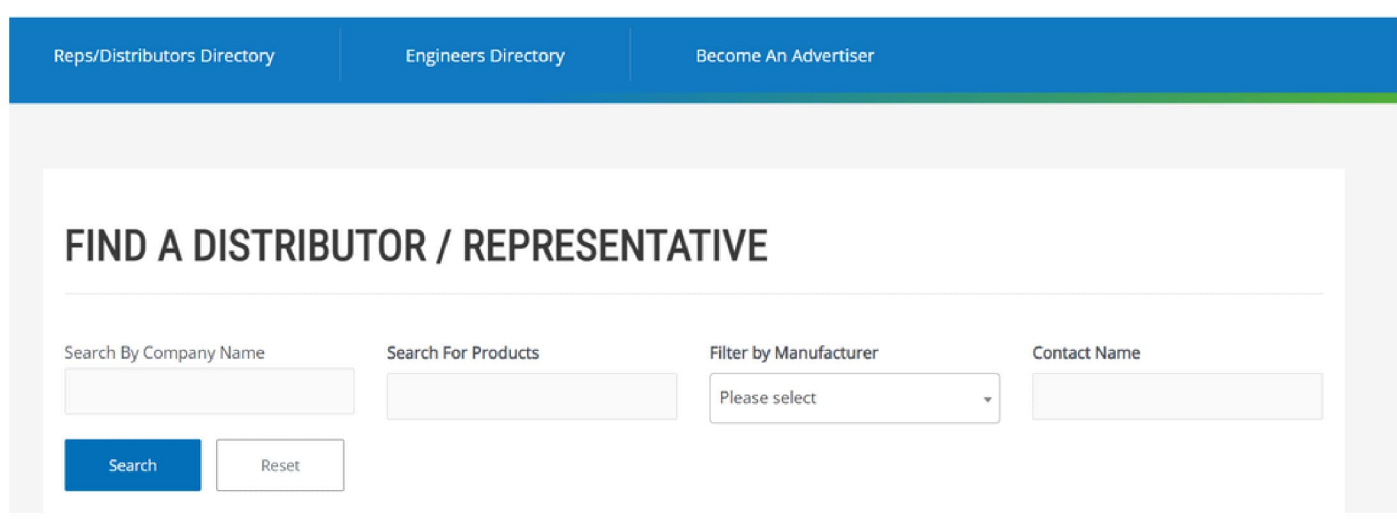
Are you looking for a local manufacturer’s rep that sells a specific product? Maybe you are looking for an engineering firm to partner with? If so, check out www.ashrae-balmer.org!

Baltimore ASHRAE is thrilled to provide BALMER - the Baltimore Area List of Mechanical Engineering Resources - a website dedicated to advertising local equipment representatives and engineering firms to make it easier to find products, reps, engineers, and their contact information.

If you are interested in listing your firm, please head to the site and click on the “Become an Advertiser” link in the main navigation bar. Rates are:

\$500/year for Reps/Distributors
\$250/year for Engineering Firms

All content on BALMER is self-managed, and your renewal period starts on the day you register. Please reach out if you have questions! president@ashrae-balto.org.



The screenshot shows the website's navigation bar with three links: "Reps/Distributors Directory", "Engineers Directory", and "Become An Advertiser". Below the navigation bar is a search section titled "FIND A DISTRIBUTOR / REPRESENTATIVE". This section contains four input fields: "Search By Company Name", "Search For Products", "Filter by Manufacturer" (with a dropdown menu showing "Please select"), and "Contact Name". At the bottom left of the search section are two buttons: "Search" and "Reset".

Be an Energy Genius

ASHRAE's Building Energy Quotient program takes your building to the next step beyond benchmarking.

Get Involved with Building EQ:

- For an introduction or training options, reach out to a [Distinguished Lecturer](#) for a presentation to your chapter or committee.
- Learn more at www.ashrae.org/communities/chapters/distinguished-lecturers

Benefits of Building EQ:

- Building EQ supports sustainability mandates and goals to reduce energy and carbon use by providing a consistent approach and standardized reports for an ASHRAE Level 1 Energy Audit as defined in ASHRAE Standard 211 *Standard for Commercial Building Energy Audits*
- Building EQ helps building owners/operators understand their building's current energy usages and more importantly how they can improve their building's energy performance, either through physical renovation or changes in operating practice.
- Building EQ goes beyond ENERGY STAR Portfolio Manager benchmarking by offering actionable recommendations and concrete energy conservation measures as part of the Level 1 Energy Audit.
- Building EQ helps ASHRAE members offer valuable services to their clientele through benchmarking and energy auditing along with an Indoor Environmental Quality survey with recorded measurements.
- When used in conjunction with Standard 211 *Standard for Commercial Building Energy Audits*, Building EQ empowers building owners to understand the value and efficiency of their building assets and, more importantly, how they can improve their buildings' performance, reduce costs, and comply with the state's energy regulations with concrete building solutions.

Recent Updates to Building EQ:

- Three new operational carbon metrics were added to the Portal tracking total annual including total annual GHG emissions, total annual GHG emissions per square foot, and a Building EQ Carbon Performance Score (ratio of the rated building emissions to the baseline building emissions). As part of this change, Building EQ is also updating the electrical site-source conversion factors to reflect specific grid conditions rather than just one national average. The United States and Canada have been updated to date and up to 15 other countries/regions will be updated by the end of the Society Year.
- An update to the Building EQ As Designed assessment and rating was launched that uses models for both the baseline and candidate buildings. The modeling follows the performance rating method (PRM) as defined in Appendix G of ASHRAE Standard 90.1. With this change, one building simulation workflow can be used for multiple purposes, saving considerable time and effort, and improving the accuracy of the As Designed assessment.

- The spreadsheet audit report is now available for all users and all projects for the \$50 fee. The Portal auto-populates this ASHRAE Standard 211 compliant Excel spreadsheet report based on the information entered into the Portal.
 - A search function has now been added to the Energy Efficiency Measures (EEM) pull down menus under the EEM Tab. This allows you to quickly search the list based on key words.
 - A sample project is now added to each new account to allow new users to test and experiment with the Portal before launching their first project.
 - An alternate label report bringing back the old letter grades was added as an option for users who looking for a more defined rating approach.
- Both French and Spanish versions of the Portal are available for use by users.

Building EQ in Green Globes:

- [The Green Building Initiative's](#) (GBI) Green Globes rating systems for new construction and existing buildings have recently added alternative pathways for project teams who prefer to use ASHRAE Building EQ as an alternative to ENERGY STAR® and/or other benchmarking processes. This represents an opportunity to provide users with more options that make sense for their building.
- [Green Globes for New Construction 2021](#) (NC 21) has adopted ASHRAE Building EQ As Designed for international projects to evaluate building energy performance based on energy modeling inputs. Point scoring within Green Globes NC 21 begins with 10 points for an 85 As Designed score, up to a maximum of 180 points for a 50 or lower score – potentially 18% out of all points available in Green Globes NC 21.
- [Green Globes for Existing Buildings 2021](#) (EB 21) adopted ASHRAE Building EQ In Operation for use by all existing commercial buildings to benchmark against the median performance of existing US buildings of similar building use, normalized by climate and occupancy. Point scoring begins with 6 points for an 85 In Operation score, up to a maximum of 100 points for a 50 or lower score – potentially 10% out of all points available in Green Globes EB 21.
- Both pathways require project teams to complete the Building EQ certification and provide the resulting label to their assigned third-party Green Globes Assessor for verification to achieve their respective points. Technical Manuals for both Green Globes NC 21 and Green Globes EB 21 include expanded guidance describing how the ASHRAE Building EQ scores are calculated using the methodology to establish benchmarks based on ANSI/ASHRAE/IES Standard 100-2015 using methodologies developed at Oak Ridge National Laboratory (ORNL). The Building EQ scoring system is also described in detail within the technical manuals' assessment guidance, including a sample ASHRAE Building EQ label and Building Performance Score.

For additional information on the benefits of Building EQ,
 please visit www.ashrae.org/BuildingEQ
 or email BuildingEQ@ashrae.org

